

New Beginnings

August 2012

Nick & Amy Modrzejewski

Missionaries on the campus of University of Illinois with Illini Life Christian Fellowship



REACHING STUDENTS AT ILLINOIS AND BUILDING GENUINE, LOVING DISCIPLES OF CHRIST



The Start A New School Year

As many of you know, the start of the Fall Semester is our busiest season of ministry. Within the next few weeks nearly 45,000 students will move into Champaign-Urbana. Of those, 8,000 will be freshmen and nearly 2,000 will be new to campus either through graduate programs or transferring in.

We get excited thinking about all the new friends we'll get to make, chances to invite students to our campus church, and opportunities to share about new life in Christ.

Here is a snapshot of each of the events we have going on this coming month and ways you can be praying for God's kingdom to advance.

Starting Now - Students Prepare for Campus - Pray they would be prepared emotionally and spiritually for the transition to campus, some for the first time, and that God would be drawing them into relationship with Him.

Week of Aug 20 - Move-in Week - Apartment leases will be starting and move-in for the dorms is Aug 23.

Aug 21,22 - Fall Planning Meetings - The Illini Life staff will meet to seek God's guidance for the semester and plan our schedules. Pray that it would be a time of direction and vision from the Lord and that we would yield to Him in all things.

Aug 25 - Trailhead - A time for our returning students to reconnect with the church and one another. There will be sharing of stories about how God moved this summer and time to share a meal together, worship together, and hear the vision of our pastors for the year of ministry ahead.

Aug 26 - Quad Day - We'll meet hundreds of students looking for groups to join. Remember that over 70% of students that go to church in high school stop in their college years. Pray that we would meet them and God would compel them to stay connected to Himself.

Aug 27 - Classes Start - Please pray that God would be a priority from the beginning for U of I students.

Weeks of Aug 27 & Sept 8 - New Student Weeks - We'll have a Preview of Illini Life, Connect Groups will meet, our annual Adventure Race, and the first worship services of the year. Please pray that students would get connected at one of these events, be drawn into community with other believers and/or come to know Christ.

Prayer Requests

- We're at 69% of our overall monthly support. Praise God for a number of new partners and support this Summer.
- Pray for students adjusting to campus life, some for the first time, others for a chance at a fresh start.
- Pray for the Illini Life Staff team, for us to seek God and hear from Him on how to best reach this campus.

Phone

Email

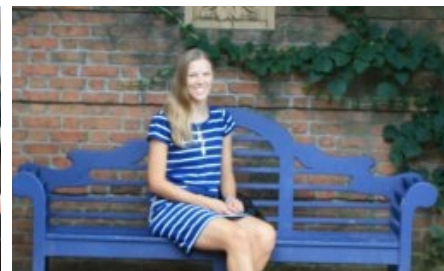
Online

www.nicknamy.net

Twitter

@modrzeje @AmyVanMod

Where We Live





As you know Illini Life is designed to reach out to and meet the needs of college students here at U of I. As we look back over all the years you've been in partnership with GCM, we can't thank you enough for the sacrifices you've made in order for us to be able to minister to college students.

And it's through your continued financial giving to GCM that we will continue to be able to do this work that we love so much.

As we've shared before, there are several other campus-focused churches that share the same mission of reaching college students that we at Illini Life have. In the past, this network of churches has identified themselves as GCM Churches. However, that has led to confusion between the mission agency that employs me (GCM) and the network of churches that is focused on reaching college students for Christ (GCM Churches).

In an effort to eliminate that confusion and better identify our mission field, GCM Churches is changing its name to Collegiate Church Network, and Illini Life will continue to be a part of this network of churches now called Collegiate Church Network.

The primary mission of both Illini Life and Collegiate Church Network remains the same: **to plant and grow collegiate churches devoted to the Great Commission.** Our vision is that through bold sharing of the gospel, intensive leadership development, and

focused church planting, a community of churches will be built that will greatly influence this country and the world for Jesus Christ.

We can't tell you how encouraging it is for us as campus missionaries to know and be able to collaborate with missionaries from these other college campuses. By working together, we are able to better reach our campuses with the gospel and work toward planting new churches on other college campuses.

Your continued financial giving to GCM is much appreciated and we hope that you are as encouraged as we are to know that our partnership is reaching college students on several different campuses.

If you'd like to read more about Collegiate Church Network or see what campuses you are helping us reach, please visit our website at www.collegiatechurchnetwork.com.

Grace and Peace,

~ nick and amy



Thanks for your partnership with GCM on our behalf. Without it we wouldn't be here sharing Jesus with the U of I campus.

